

For all DoorBird products with relay contacts, it is possible to attach different kinds of electric door openers, e.g., electric strikes (fail-locked) or holding magnets (fail-unlocked).

DoorBird products do not offer any power on the relay contacts. Any electric door opener attached must use a separate power supply operating with a maximum of 24 V / 1 A.

## DOOR OPENER / RELAY CONFIGURATION

### Relay configuration for electric strikes (normally-open / fail-locked):

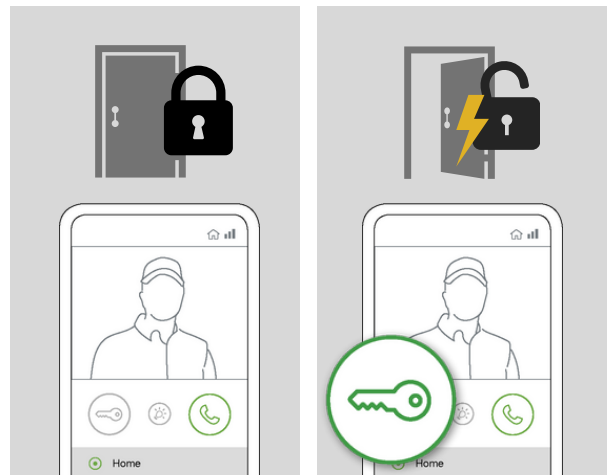
The door is locked without power. It opens when powered.

AC operated door openers create a buzzing noise when triggered, DC operated door openers do not.

In the DoorBird App / Webadmin, configure the relay contact with mode "default" and set the default position to "open". Set the duration to the time the relay should trigger the attached door opener.

Example product:

<https://secure.effeff.de/de/en/produktkatalog/effeff-t160082>



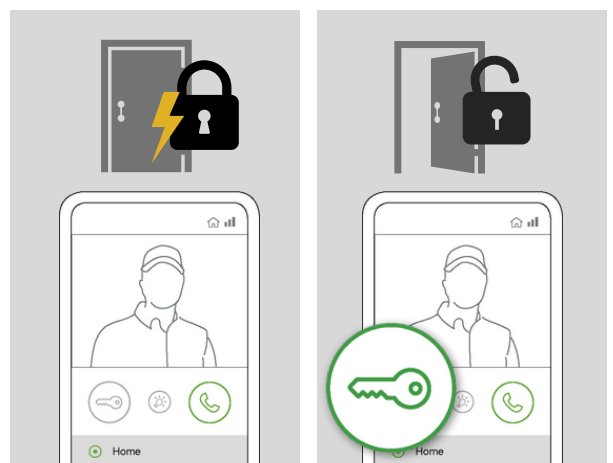
### Relay configuration for holding magnets (normally closed / fail-unlocked):

The door is locked when powered. It opens when power is cut.

In the DoorBird App / Webadmin, configure the relay contact with mode "default" and set the default position to "closed". Set the duration to the time the relay should trigger the attached door opener.

Example product:

<https://secure.effeff.de/de/en/produktkatalog/effeff-t160084>



# DOOR OPENER / EXTERNAL INPUTS

## DoorBird devices with an external input to trigger a relay (e.g. D11x series, D21x series, etc.)

For the D10x/D11x/D20x/D21x series, the external contact triggers the first relay of the product. It is not possible to configure any different relay.

For the D41x series, it is possible to trigger any relay of the product or paired peripheral devices.

Please refer to the manual of the device on how to attach third-party-products to the inputs (e.g. door opener button) and relay contacts (e.g. electric door opener).

Example products:

<https://secure.effeff.de/de/en/produktkatalog/?c=effeff&treeID=157526>

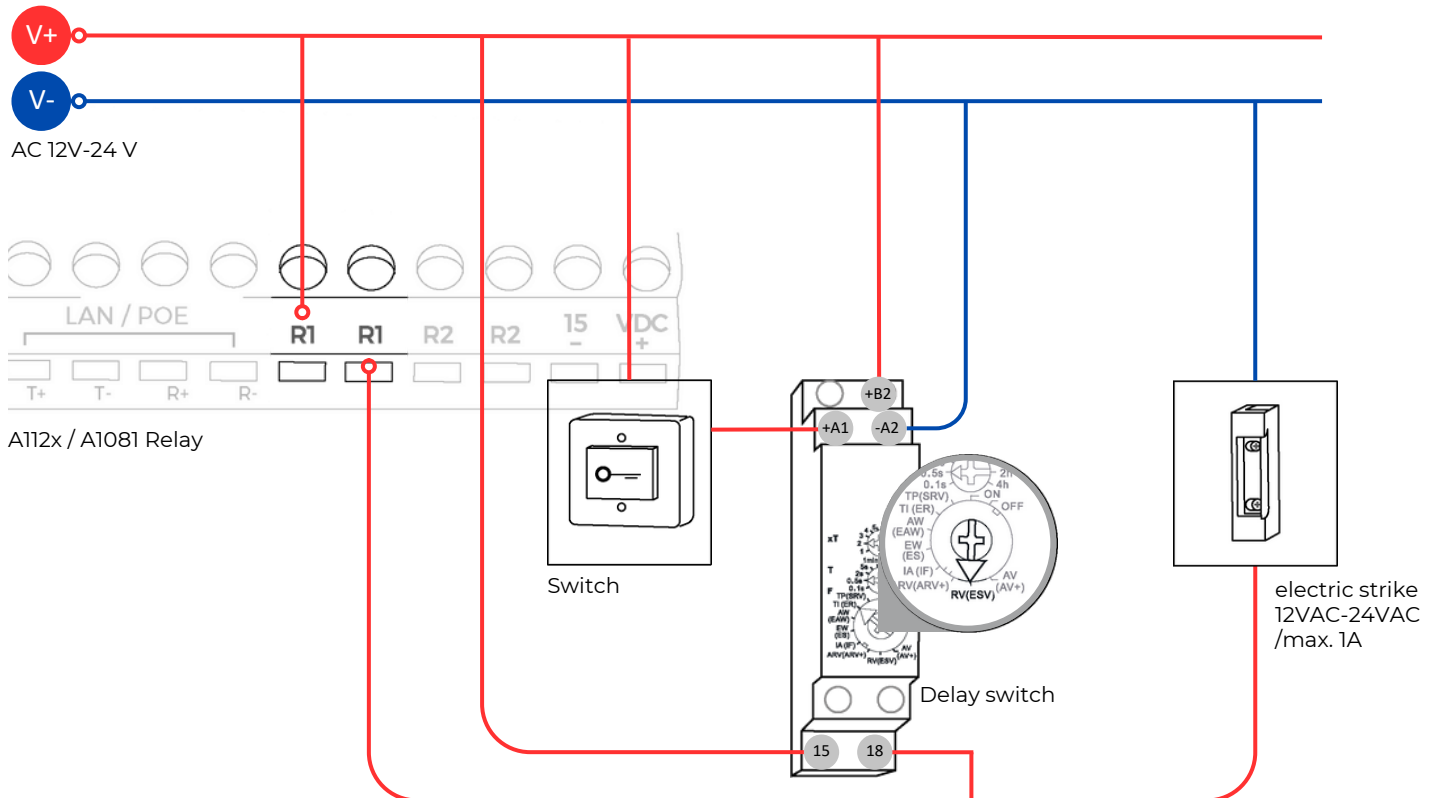
## DoorBird devices without an external input to trigger a relay (e.g. A112x, A1081, etc.)

Since some products do have relay contacts, but no option to trigger them with a classic door opener button, it's possible to use a delay switch. While it's possible to use different components, we tested the following solution successfully and cannot provide information for alternative models.

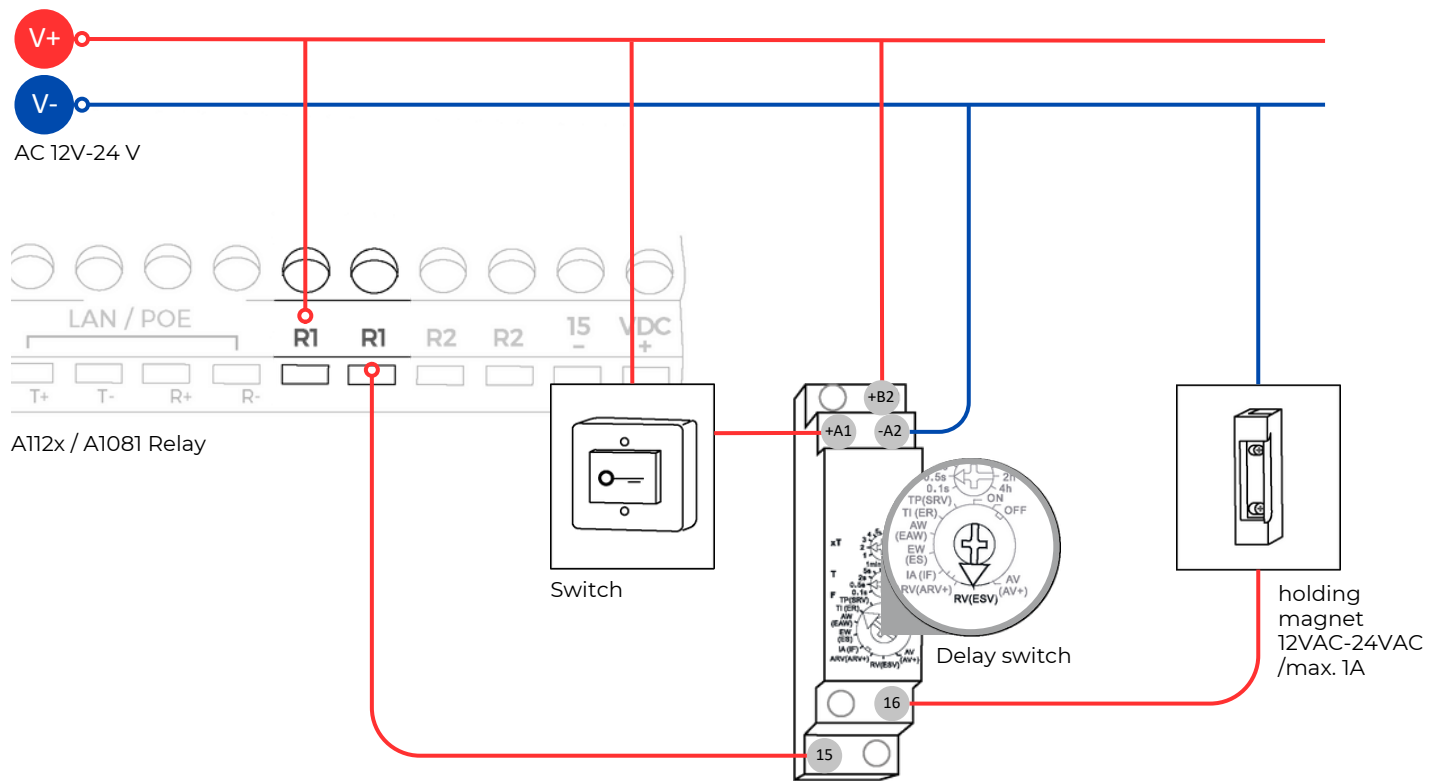
Requirements:

- DoorBird A112x or A1081
- electric strike (e.g. <https://secure.effeff.de/de/en/produktkatalog/effeff-t160082>) or holding magnet (e.g. <https://secure.effeff.de/de/en/produktkatalog/effeff-t160084>)
- door opener button (e.g. <https://secure.effeff.de/de/en/produktkatalog/effeff-t160082>)
- delay switch (e.g. [Eltako MFZ12DX-UC](https://www.eltako.com/produkte/mfz12dx-uc))

## Relay configuration for electric strikes (normally-open / fail-locked):



Relay configuration for holding magnets (normally closed / fail-unlocked):



The settings in the DoorBird App / Webadmin remain unaltered regarding the examples shown without using a delay switch.

Please ensure that only qualified personnel carries out the installation. An incorrect installation can damage the devices.