

SMART LOCK	REGION/ COUNTRIES	YALE ACCESS MODULE	CONNECT BRIDGE
Assure Lock Keypad Keyed YRD-216-XXX-XXX	Americas	✓	✓
Assure Lock Touchscreen Keyed YRD-226-XXX-XXX	Americas	✓	✓
Assure Lock SL Touchscreen Key-Free YRD-256-XXX-XXX	Americas	✓	✓
Assure Lever Keypad Keyed YRL-216-XXX-XXX	Americas	✓	✓
Assure Lever Touchscreen Keyed YRL-226-XXX-XXX	Americas	✓	✓
Assure Lever Keypad Key-Free YRL-236-XXX-XXX	Americas	✓	✓
Assure Lever Touchscreen Key-Free YRL-256-XXX-XXX	Americas	✓	✓
Assure Lock for Andersen Patio Doors YRM276-CB1-XXX	Americas	✓	✓
Assure Lock 2 Keypad with Bluetooth Keyed YRD-410-BLE-XXX	Americas	✗	✓
Assure Lock 2 Touchscreen with Bluetooth Keyed YRD-420-BLE-XXX	Americas	✗	✓
Assure Lock 2 Keypad with Bluetooth Key-Free YRD-430-BLE-XXX	Americas	✗	✓
Assure Lock 2 Touchscreen with Bluetooth Key-Free YRD-450-BLE-XXX	Americas	✗	✓
Assure Lock 2 Keypad with Wi-Fi Keyed YRD-410-WFI-XXX	Americas	✗	✓
Assure Lock 2 Touchscreen with Wi-Fi Keyed YRD-420-WFI-XXX	Americas	✗	✓
Assure Lock 2 Keypad with Wi-Fi Key-Free YRD-430-WFI-XXX	Americas	✗	✓
Assure Lock 2 Touchscreen with Wi-Fi Key-Free YRD-450-WFI-XXX	Americas	✗	✓
Assure SL	Middle East	✓	✓
August 4th Gen	Americas	✗	✓
August 3rd Gen Callisto	Americas	✗	✓
August Pro	Americas	✗	✓
Conexis	UK	✓	✓
Digital Monoblok	MEA	✓	✓
Doorman V2N	Scandinavia	✓	✓
Doorman L3	Scandinavia	✗	✓
Doorman V2N	Finland	✓	✓
Doorman L3	Finland	✗	✓
Keyless	UK, MEA	✓	✓
Linus Euro	PAN Euro	✗	✓
Linus Finland	Finland	✗	✓
Linus Scandinavia	Scandinavia	✗	✓
Linus Finland	Finland	✗	✓
nexTouch Cylindrical Level Lock ( Commercial)	Americas	✓	✓
nexTouch Sectional Mortise Lock ( Commercial)	Americas	✓	✓
Smart Cabinet Lock	EMAIA	✗	✓
Smart Lock Pro	SAARC	✗	✓

SMART LOCK	REGION/ COUNTRIES	YALE ACCESS MODULE	CONNECT BRIDGE
Smart Safe	EMAIA	✗	✓
Yale Delivery Box	Americas	✗	✓
Yale Smart Cabinet Lock	Americas	✗	✓
Yale Smart Safe	Americas	✗	✓
YDM3109A	MEA, SAARC	✗	✓
YDM4109A	MEA, SAARC	✓	✓
YDM3115A	SAARC	✓	✓
YDM3220	SAARC	✓	✓
YDM7116A	SAARC	✓	✓
YDM7220	SAARC	✓	✓
YDD724A	SAARC	✓	✓
YDF40A	SAARC	✓	✓
YDR30GA	SAARC	✓	✓
YDR41A	SAARC	✓	✓
YDR414A	SAARC	✓	✓
YDR50GA	SAARC	✓	✓
YMF40A	SAARC	✓	✓
YMI70A	MEA, SAARC	✓	✓
YMH71A	MEA, SAARC	✓	✓
YRC256-XXX-XXX (Pro- Commercial)	Americas	✓	✓
YRC226/YRC620-XXX-XXX (Pro Commercial)	Americas	✓	✓
YRC216-XXX-XXX (Pro Commercial)	Americas	✓	✓
Yale Smart Safe	Americas	✓	✓

## SYSTEM REQUIREMENTS

- DoorBird IP Video Door Station D10x/D11x/D20x/D21x-Series or DoorBird IP Upgrade D301A (Audio only) Yale Smart Lock

## ADDITIONAL INFORMATION

The following guide will take you through the steps of setting up a DoorBird IP Video Door Station in connection with a Yale Smart Lock.

Please make sure that your DoorBird is online, using this service:

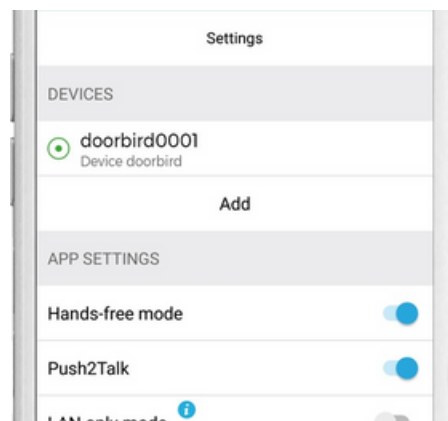
<https://www.doorbird.com/checkonline>

The local IP address of your DoorBird is available from the same page.

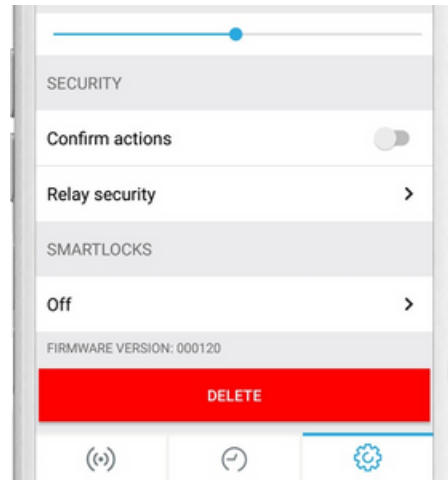
## 1. SETTING UP THE DOORBIRD IP VIDEO DOOR STATION

For the DoorBird IP Video Door Station to be properly able to communicate with the Yale Smart Lock, the DoorBird device's settings must be adjusted accordingly.

1. Open the DoorBird App and tap the cogwheel symbol on the bottom right to enter the settings screen.



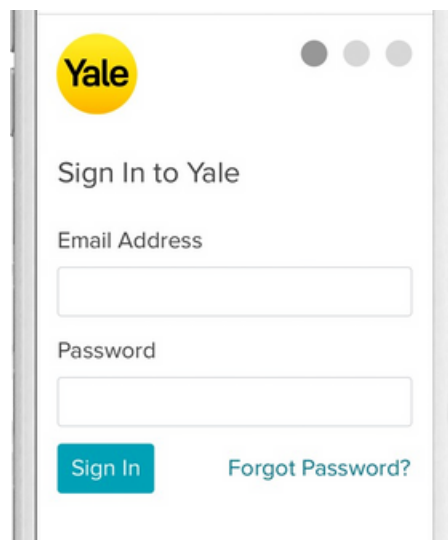
2. Tap the device you wish to configure.
3. On the following screen, scroll down and tap the field in the "SMARTLOCKS" section.



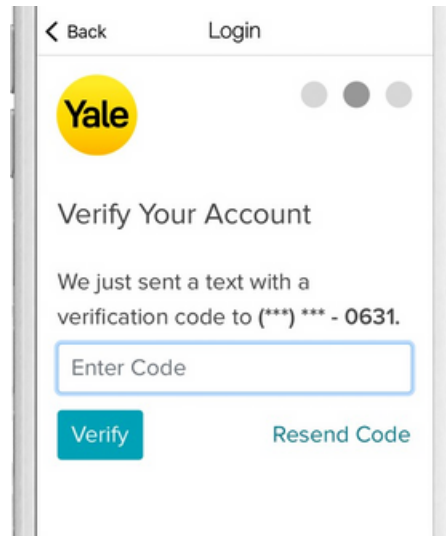
4. From the list of compatible smart locks, tap “Yale Bridge (API integration)”.



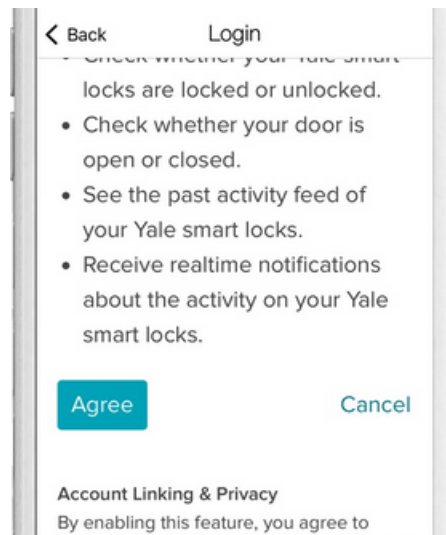
5. You will subsequently be presented with the Yale Login screen. Enter the credentials belonging to your Yale account and tap “SIGN IN”.



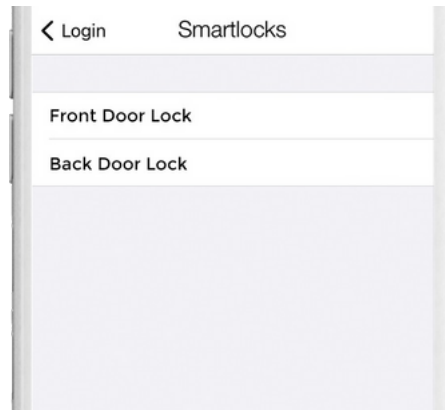
6. After logging in, a verification code will be sent to your smartphone. Enter it in the following field and hit “Verify”.



7. When prompted with the required app privileges, tap "Agree".



8. Should you have multiple Yale locks associated with this account, you will be asked to select which one to connect with your DoorBird IP Video Door Station.



You have now successfully completed the setup of the Yale Smart Lock.

For questions and problems regarding the product "Yale Smart Lock" please contact the manufacturer online:  
<https://www.yalehome.com/support>

For questions and problems regarding our devices (DoorBird IP Video Door Station) please use the contact form to  
get In touch with our technical support: <https://www.doorbird.com/contact>.